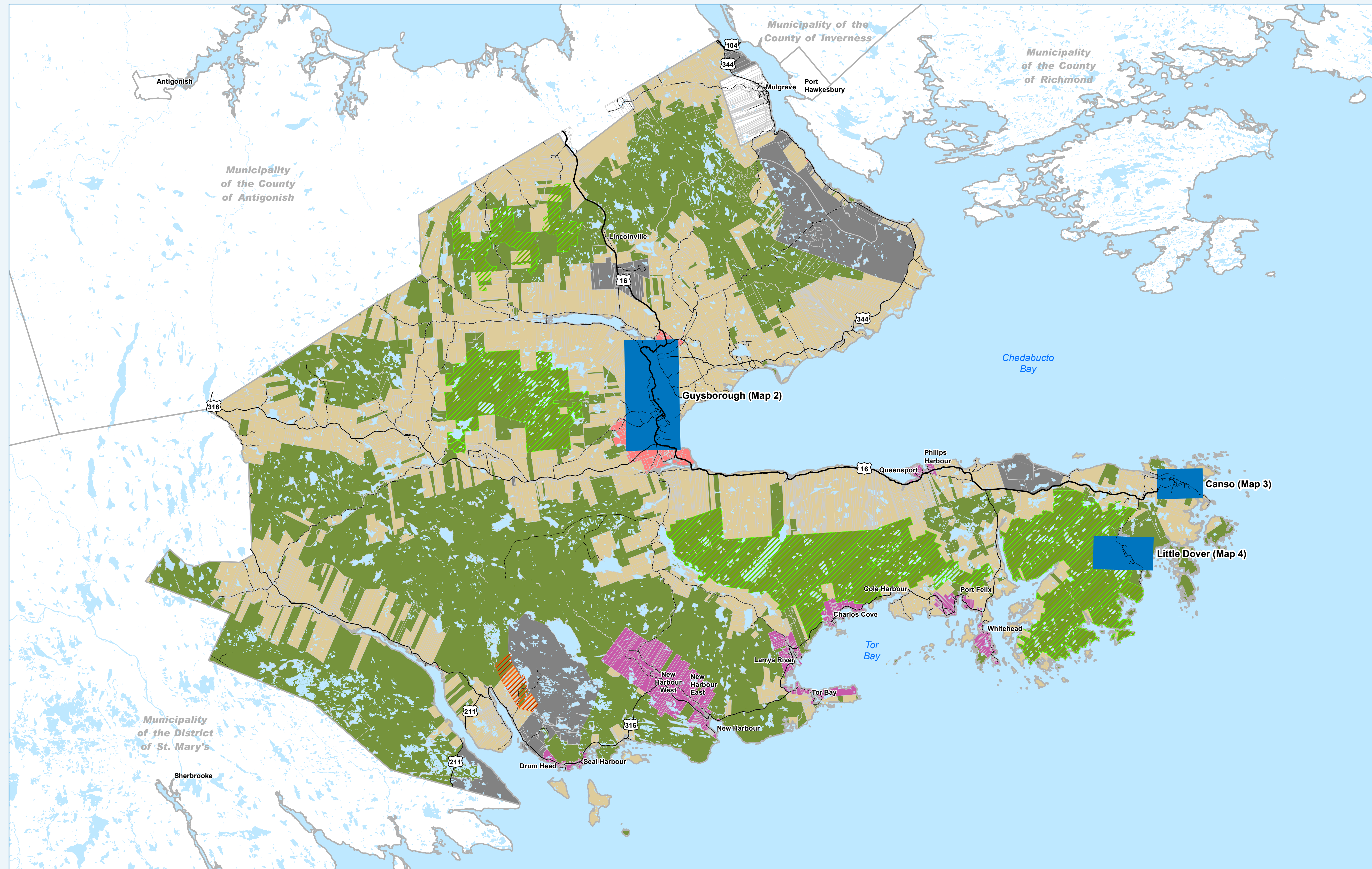


Municipality of the District of Guysborough Municipal Planning Strategy

Generalized Future Land Use Map 1 - Municipality of the District of Guysborough



Legend

Generalized Future Land Use

- Mixed Use Growth Centre
- Coastal Community
- Rural Development
- Rural Industrial and Extraction
- Environmental and Open Space

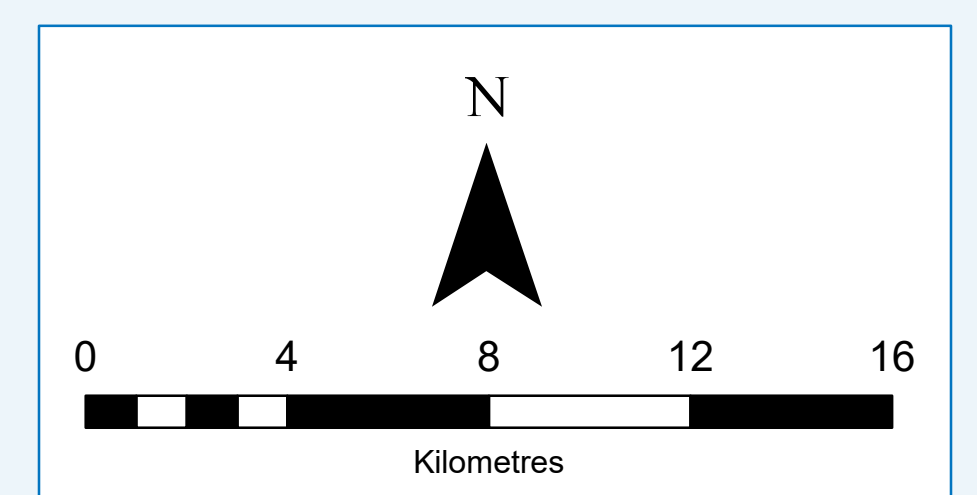
Protected Areas

- Provincial Protected Wilderness Areas
- Mineral Opportunity District

Additional Zoning Maps

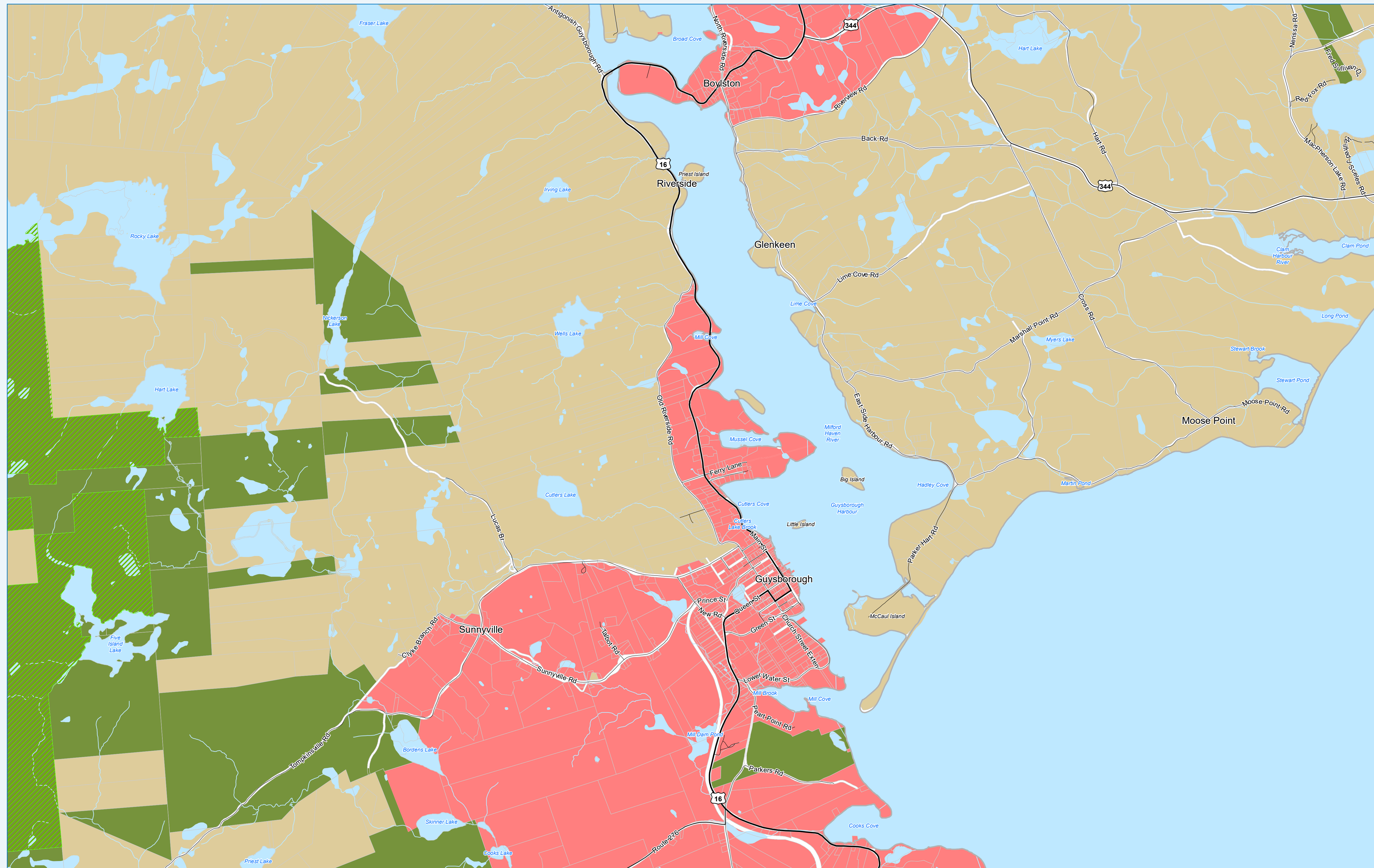
- See Maps 2-4

Sources: Municipality of the District of Guysborough; GeoNOVA



Municipality of the District of Guysborough Municipal Planning Strategy

Generalized Future Land Use 2 - Guysborough



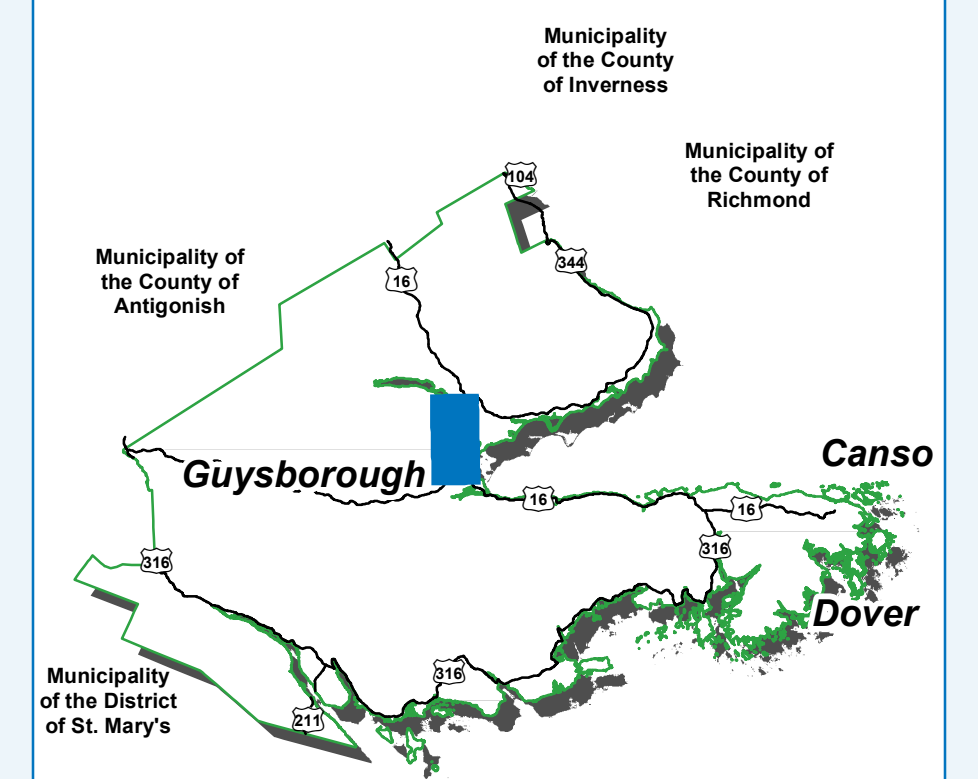
Legend

Generalized Future Land Use

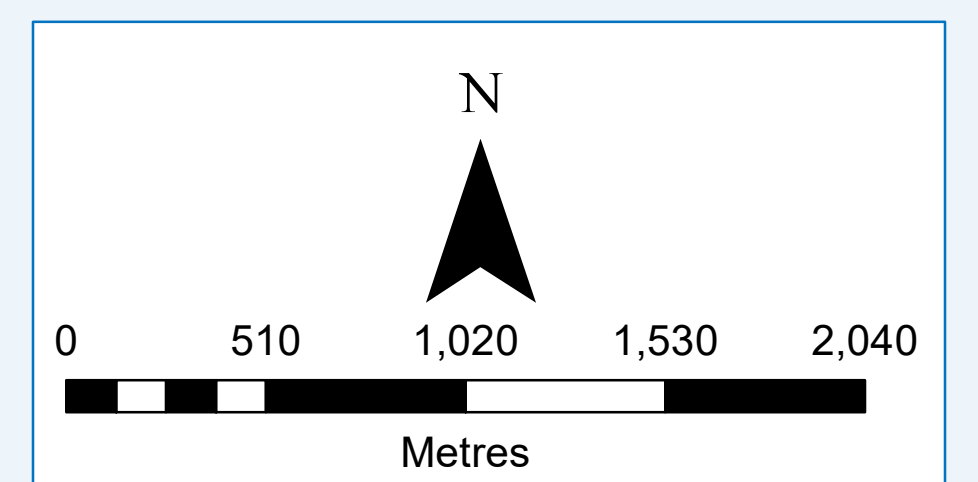
- Mixed Use Growth Centre
- Rural Development
- Environmental and Open Space

Protected Areas

- Provincial Protected Wilderness Areas

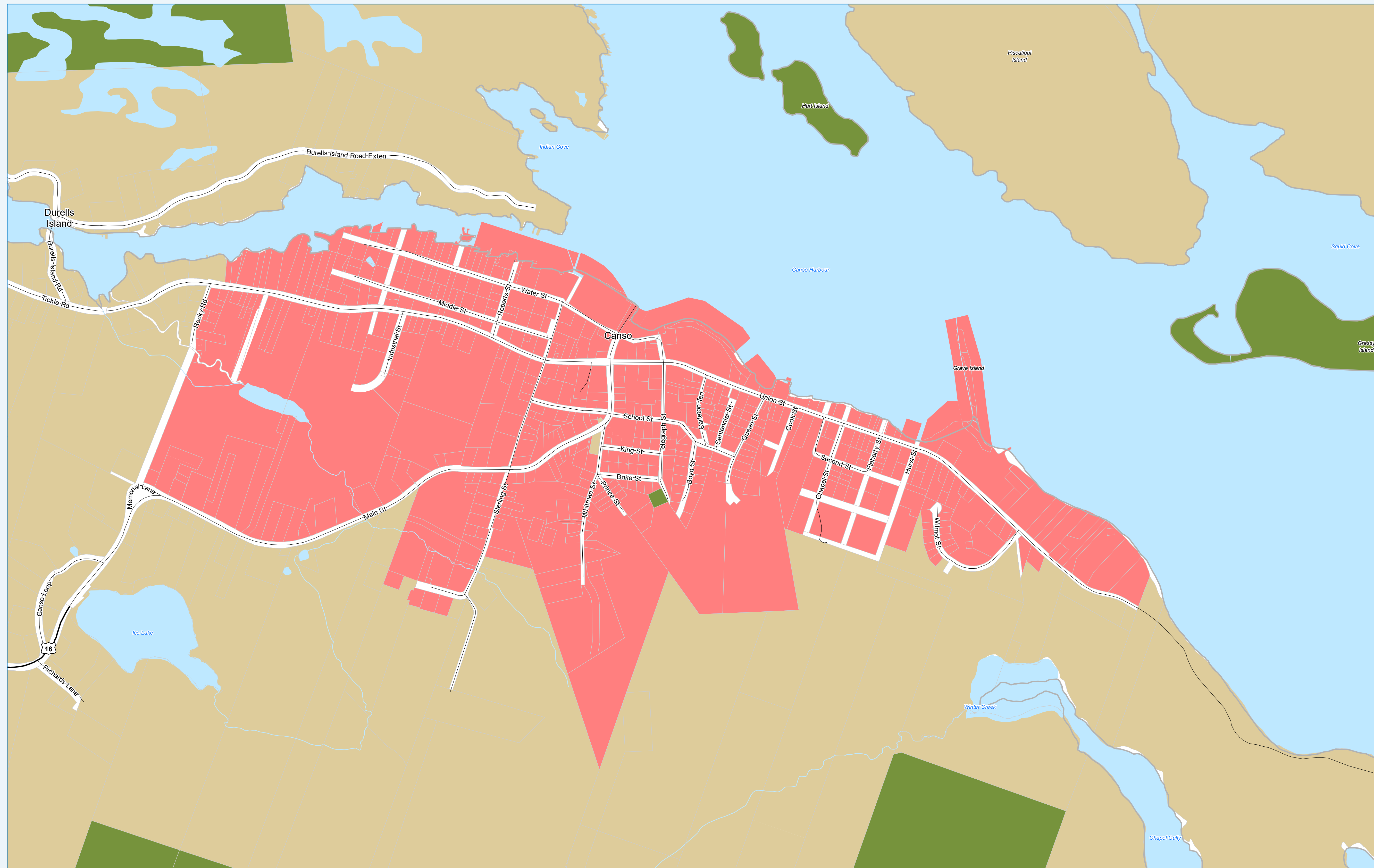


Sources: Municipality of the District of Guysborough; GeoNOVA



Municipality of the District of Guysborough Municipal Planning Strategy

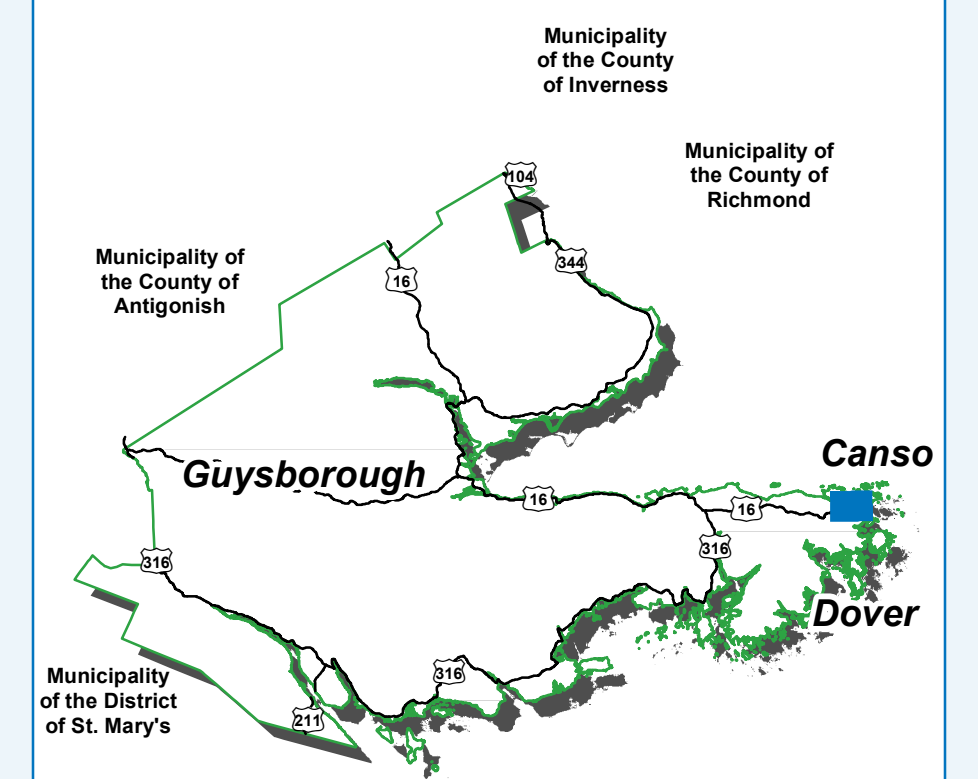
Generalized Future Land Use 3 - Canso



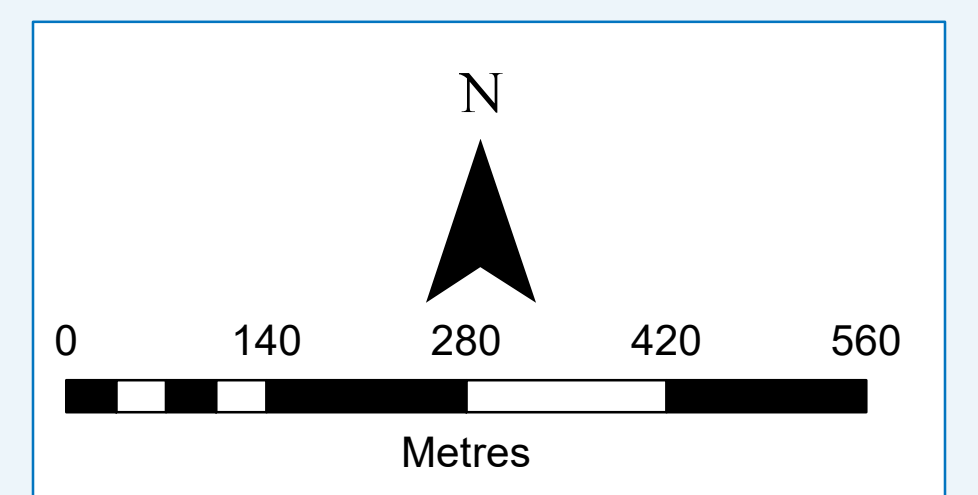
Legend

Generalized Future Land Use

- Mixed Use Growth Centre
- Rural Development
- Environmental and Open Space

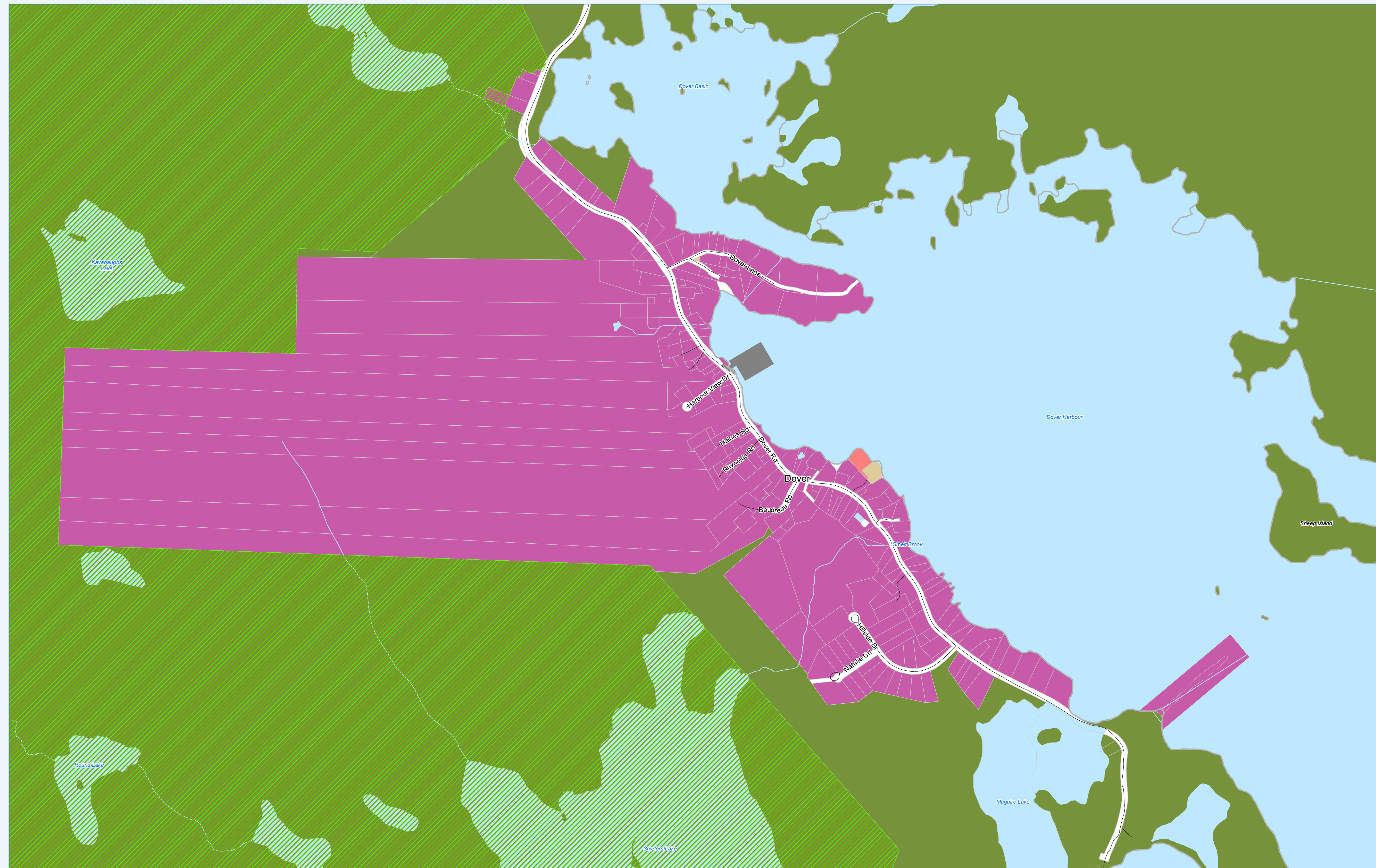


Sources: Municipality of the District of Guysborough; GeoNOVA



Municipality of the District of Guysborough Municipal Planning Strategy

Generalized Future Land Use 4 - Little Dover



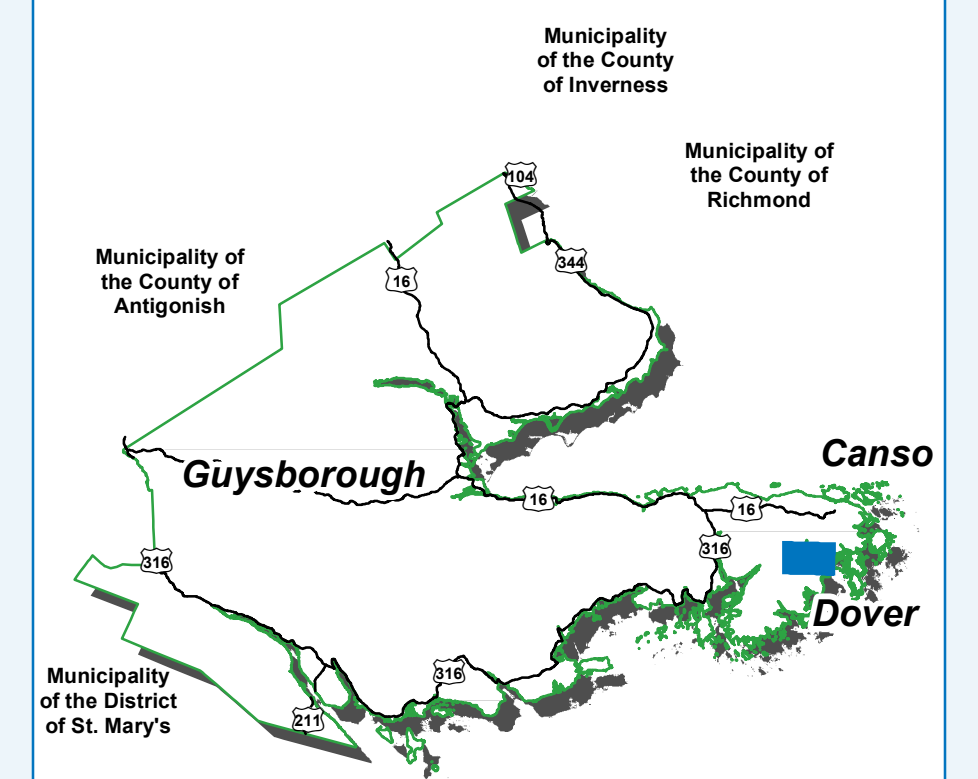
Legend

Generalized Future Land Use

- Mixed Use Growth Centre
- Coastal Community
- Rural Development
- Rural Industrial and Extraction
- Environmental and Open Space

Protected Areas

- Provincial Protected Wilderness Areas



Sources: Municipality of the District of Guysborough; GeoNOVA

