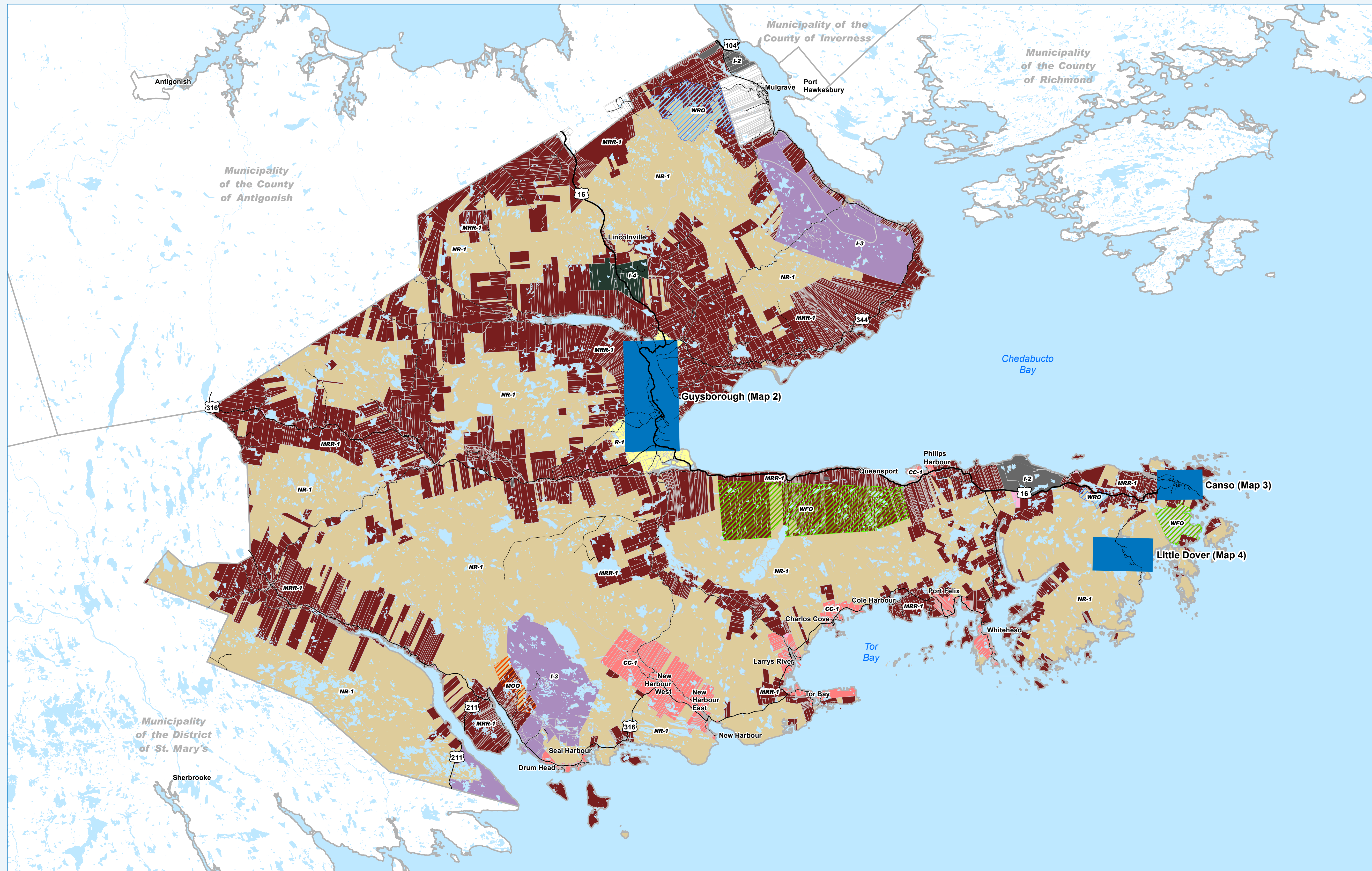


Municipality of the District of Guysborough Land Use Bylaw

Zoning Map 1 - Municipality of the District of Guysborough



Legend

Residential

- R-1 - Residential General
- R-2 - Residential Multiple Unit
- R-3 - Manufactured Home Park

Commercial

- C-1 - Commercial General
- MC-1 - Major Commercial

Industrial

- I-1 - Industrial Light
- I-2 - Industrial Heavy
- I-3 - Industrial Resource
- I-4 - Green Industrial
- I-5 - Marine Industrial

Mixed Use

- CC-1 - Coastal Community
- MRR-1 - Mixed Use Rural Residential

Community Use

- REC-1 - Recreational

Environmental

- NR-1 - Natural Resource

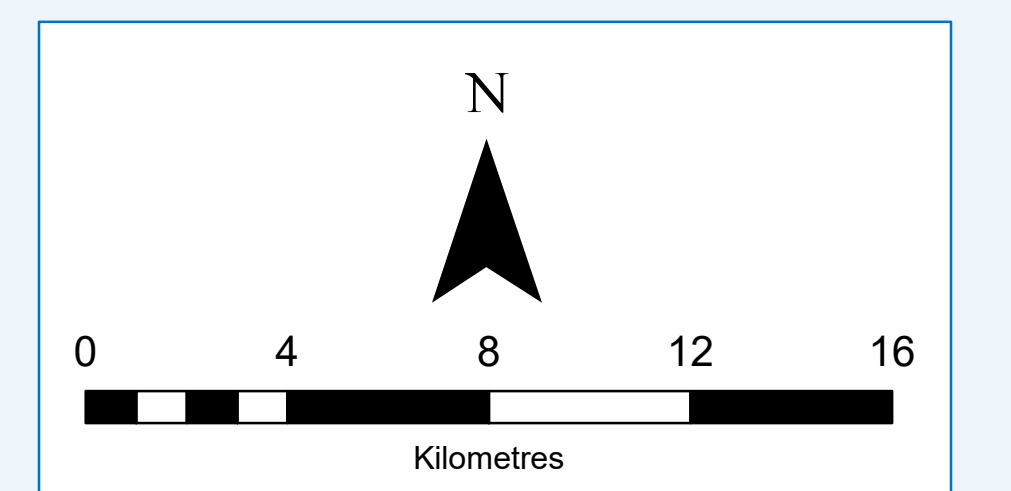
Overlay

- WFO - Wind Farm Overlay
- WRO - Watershed Reservoir Overlay
- MOO - Mineral Opportunity Overlay

Additional Zoning Maps

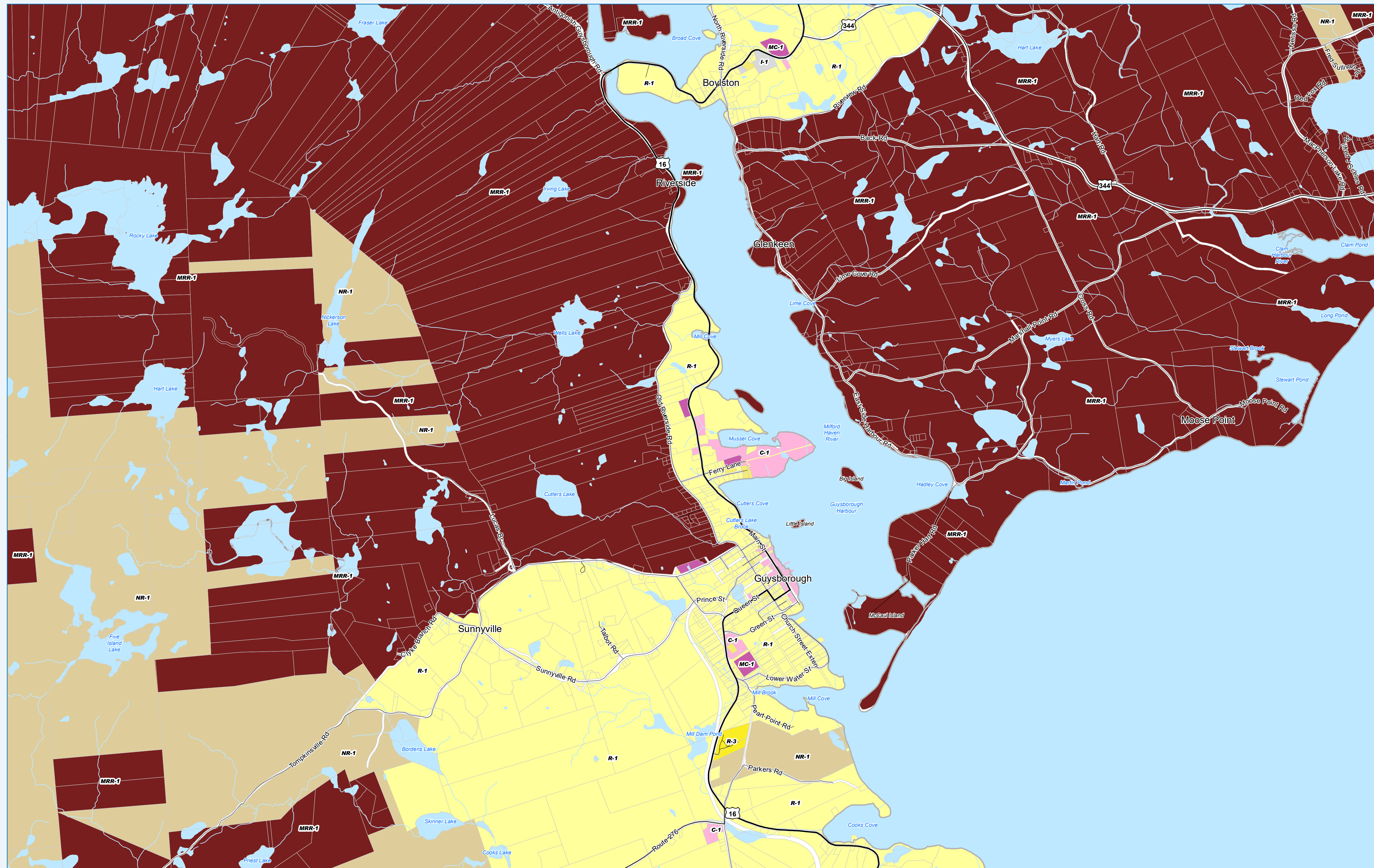
- See Maps 2-4

Sources: Municipality of the District of Guysborough; GeoNOVA



Municipality of the District of Guysborough Land Use Bylaw

Zoning Map 2 - Guysborough



Legend

Residential

- R-1 - Residential General
- R-2 - Residential Multiple Unit
- R-3 - Manufactured Home Park

Commercial

- C-1 - Commercial General
- MC-1 - Major Commercial

Industrial

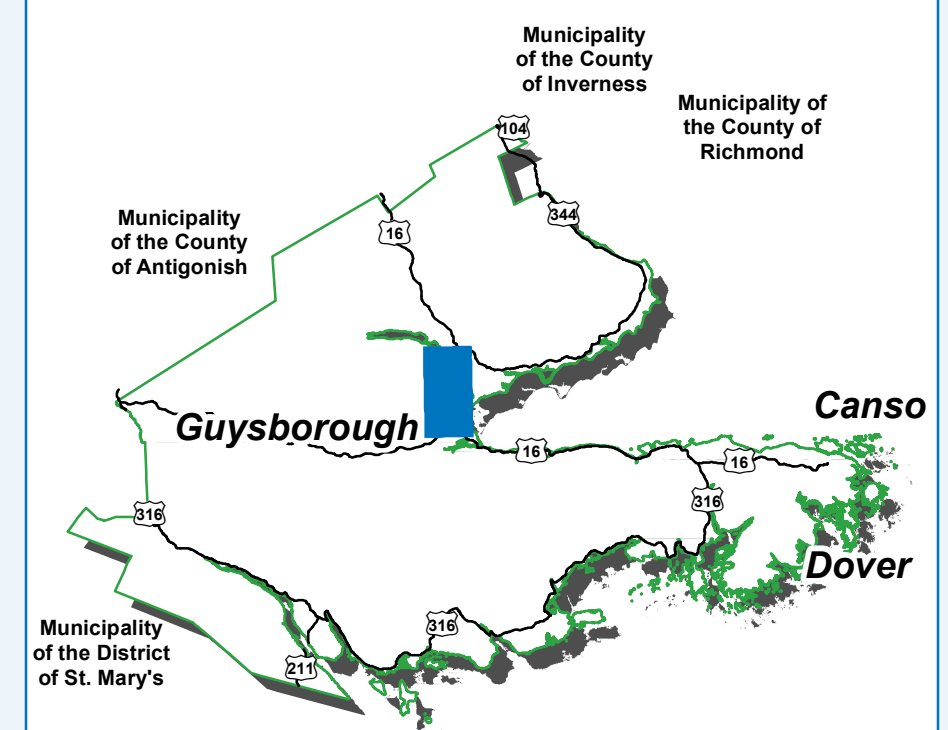
- I-1 - Industrial Light

Mixed Use

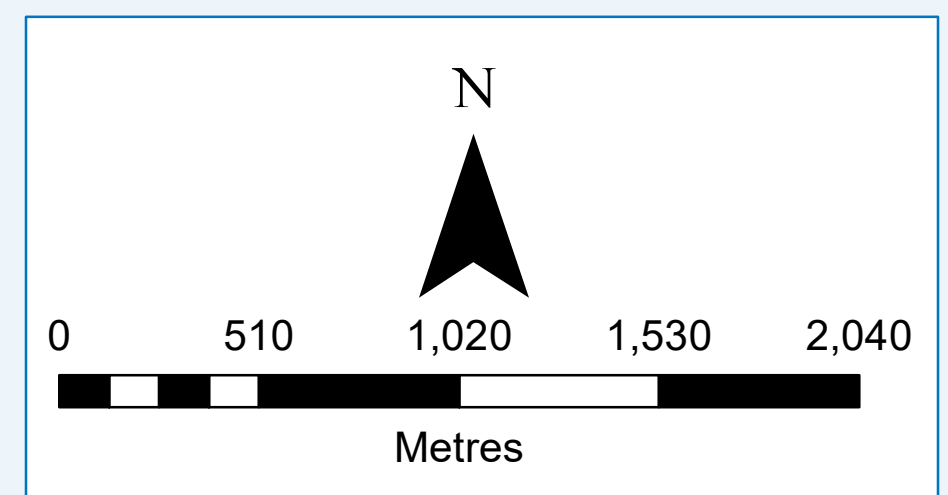
- MRR-1 - Mixed Use Rural Residential

Environmental

- NR-1 - Natural Resource

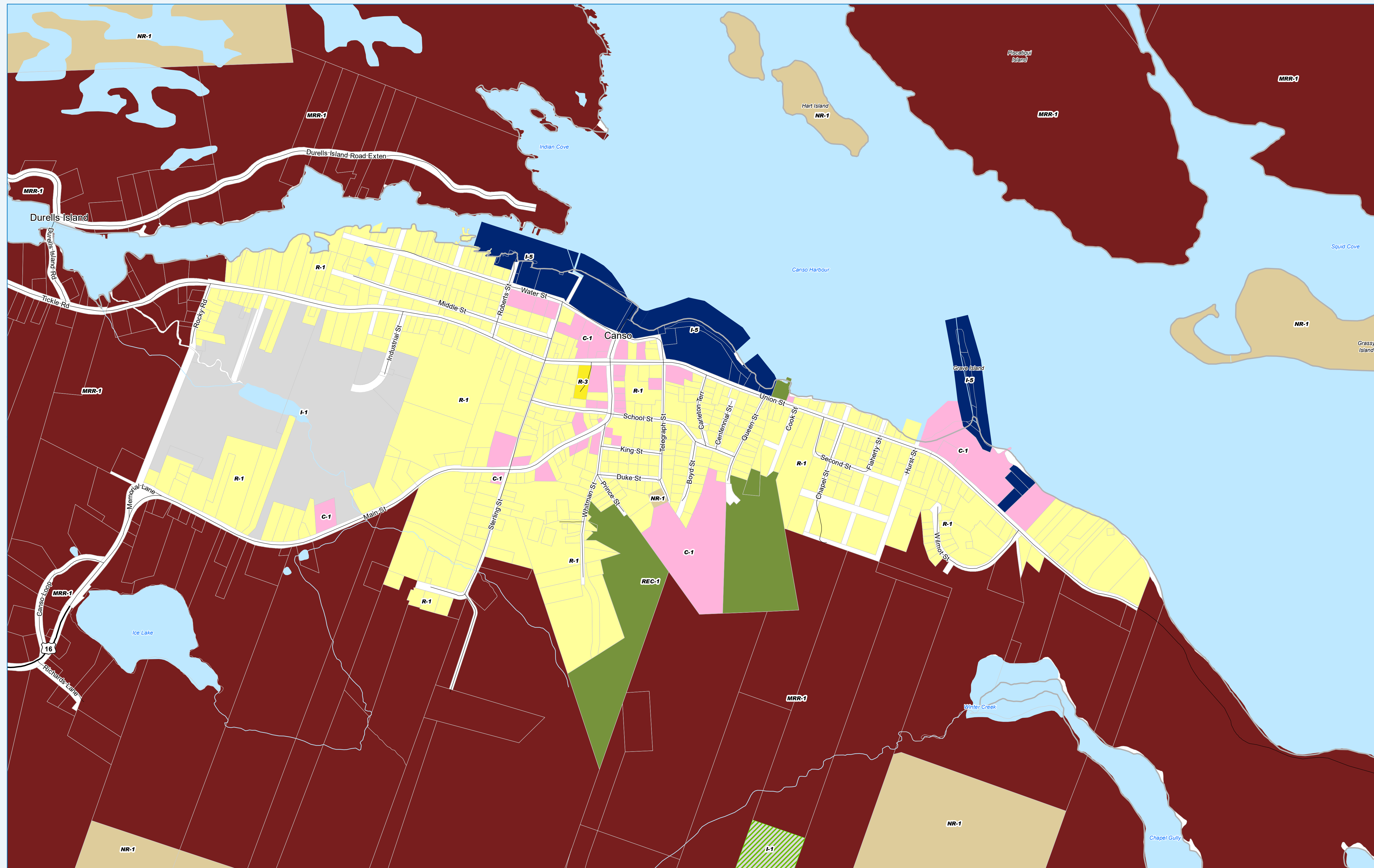


Sources: Municipality of the District of Guysborough; GeoNOVA



Municipality of the District of Guysborough Land Use Bylaw

Zoning Map 3 - Canso



Legend

Residential

- R-1 - Residential General
- R-3 - Manufactured Home Park

Commercial

- C-1 - Commercial General

Industrial

- I-1 - Industrial Light
- I-5 - Marine Industrial

Mixed Use

- MRR-1 - Mixed Use Rural Residential

Community Use

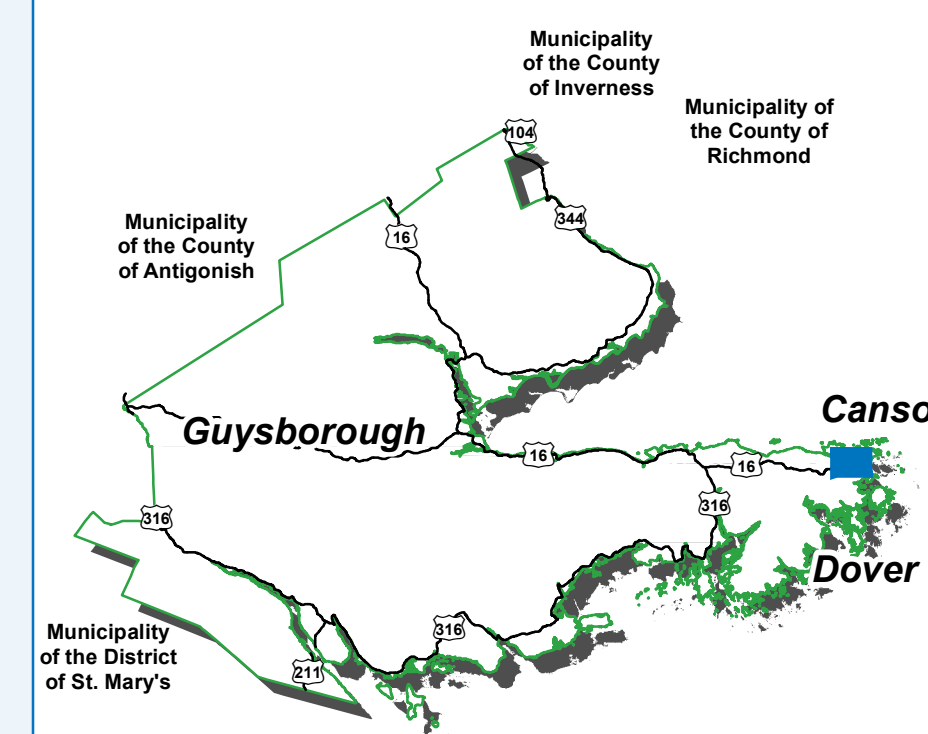
- REC-1 - Recreational

Environmental

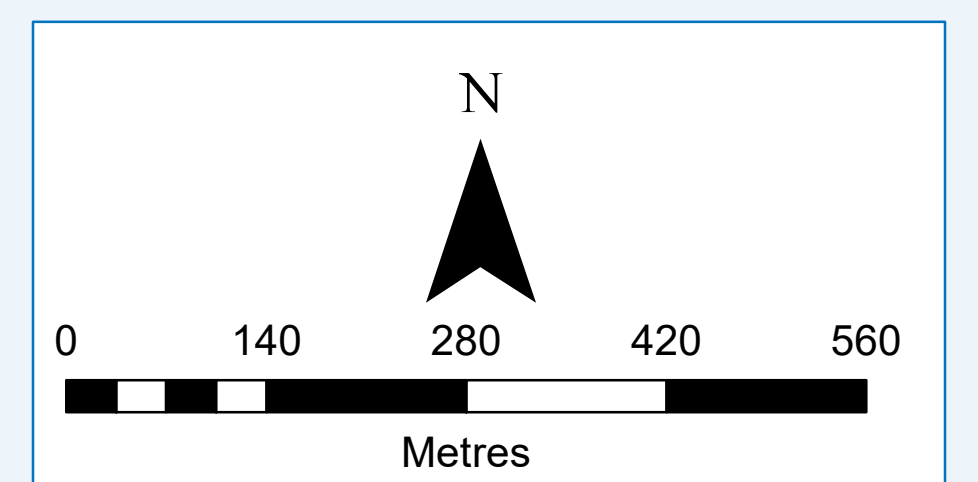
- NR-1 - Natural Resource

Overlay

- WFO - Wind Farm Overlay

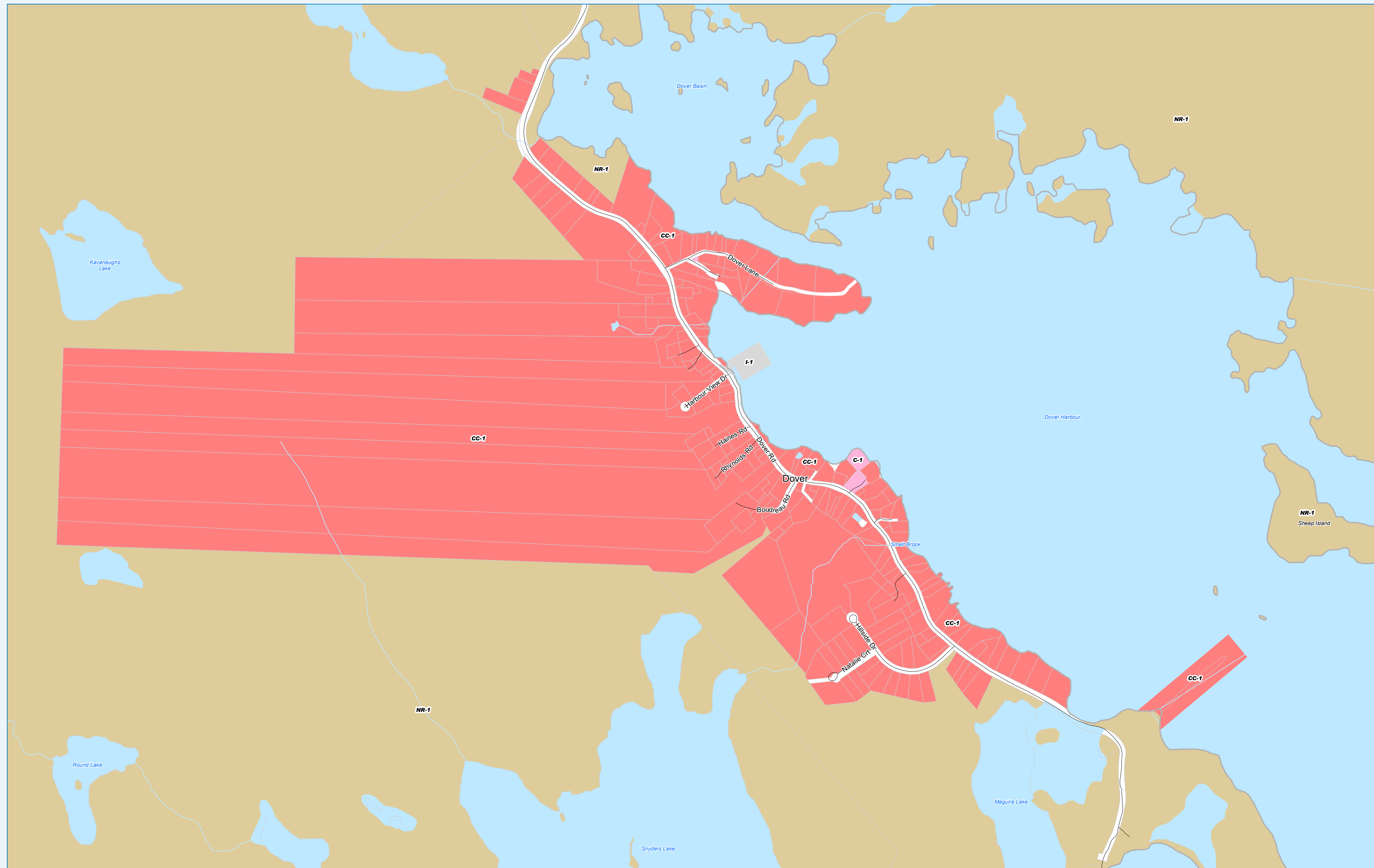


Sources: Municipality of the District of Guysborough; GeoNOVA



Municipality of the District of Guysborough Land Use Bylaw

Zoning Map 4 - Little Dover



Legend

Commercial

C-1 - Commercial General

Industrial

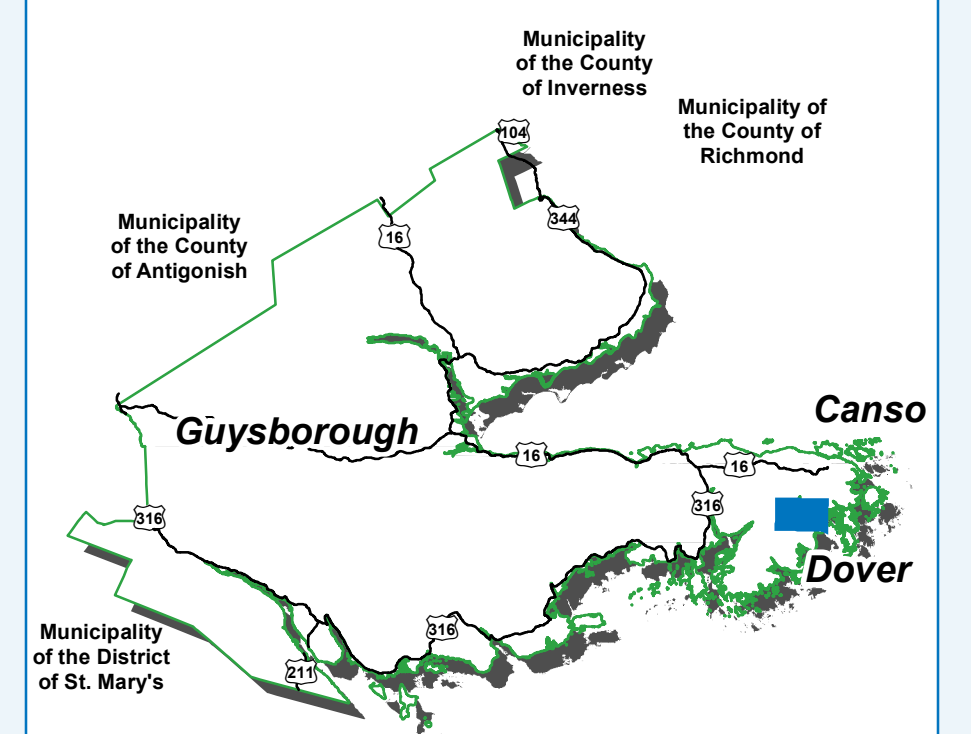
I-1 - Industrial Light

Mixed Use

CC-1 - Coastal Community

Environmental

NR-1 - Natural Resource



Sources: Municipality of the District of Guysborough; GeoNOVA

